

Introductory Discounts 2016*

For the first 20 CLIENTS and until 31st December 2016

We design, manufacture and build any timber-frame house to suit your needs. We also offer any house construction elements, house extension parts or any other property parts per your order. As we work directly with manufacturers with over 20 years of experience in timber-construction industry, we can provide the highest standard of services and products, innovative eco-friendly technologies while maintaining the lowest prices.

IN ADDITION TO OUR COMPETITIVE PRICES WE ARE PLEASED TO OFFER A FANTASTIC DISCOUNT FOR THE FIRST 20 CUSTOMERS ORDERING THEIR DREAM HOUSES IN 2016. THIS PROMOTION APPLIES TO ALL HOUSES STARTING AT JUST £59 000 (basic price).

% OFF DISCOUNT	APPLIES TO THE HOUSES FROM £	YOU PAY	YOU SAVE
• 11%	£59,000	£52,510	£6,490
• 12%	£69,000	£60,720	£8,280
• 13%	£79,000	£68,730	£10,270
• 14%	£89,000	£76,540	£12,460
• 15%	£99,000	£84,150	£14,850
• 16%	£109,000	£91,560	£17,440
• 17%	£119,000	£98,770	£20,230
• 18%	£129,000	£105,780	£23,220
• 19%	£139,000	£112,590	£26,410
• 20%	£149,000	£119,200	£29,800
• 21%	£159,000	£125,610	£33,390

The discount applies to the BASIC PRICE and does not apply to any other additional costs.

The BASIC PRICE includes labour costs and excludes the VAT¹, the price of the land and all or some of the following costs:

- Foundations
- Utilities connection (approx. £6000-£8000)
- Architectural plan (from approx. £500 – £1000)
- Administration fee £199
- Any other custom extras
- Any other services (detailed in a particular quote)

* The introductory discount will apply to the final basic price.

¹ VAT can be at zero rate – terms and conditions apply

Our introductory prices per square meter are as follows:

- **LOG HOUSES** start from £ 1,310 per square meter
- **PREFAB HOUSES** £1,200/ m² (wood-frame construction)

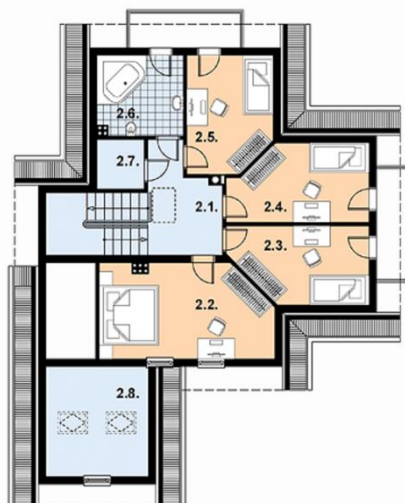
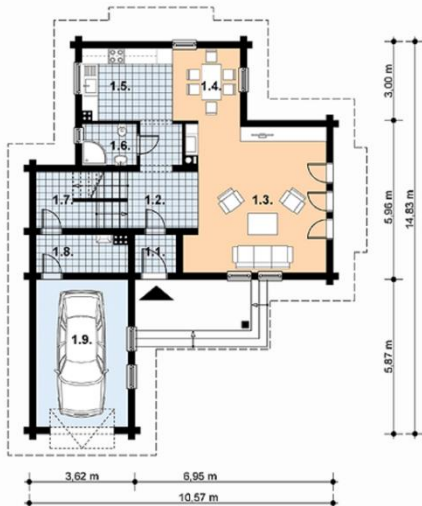
The price per square meter is to give you an idea of our price estimate; however every order is individually priced according to the plan, complexity of work and the area/location for development.

Our Company co-operates with architectural studios specialising in the log houses and prefab houses design, however we can build a house based on any plans and projects submitted by our clients. Detailed quote for properties we offer is available on a request.

Let's assume now, that you are building a lovely family house for £159,000.

With the 21% discount **you get £33,390 OFF** and you pay only **£125,610!**

Now let's see what you can get for this price!
3-4 bedrooms PREFAB HOUSE like this:



Or for the similar price you can get one of our beautiful 3 bedrooms LOG HOUSES (for example):



Get in touch as soon as possible to get the discount!



We are looking forward to hearing from you soon.

+44 20 3418 8151

contact@cbi-home.co.uk

www.cbi-home.co.uk
